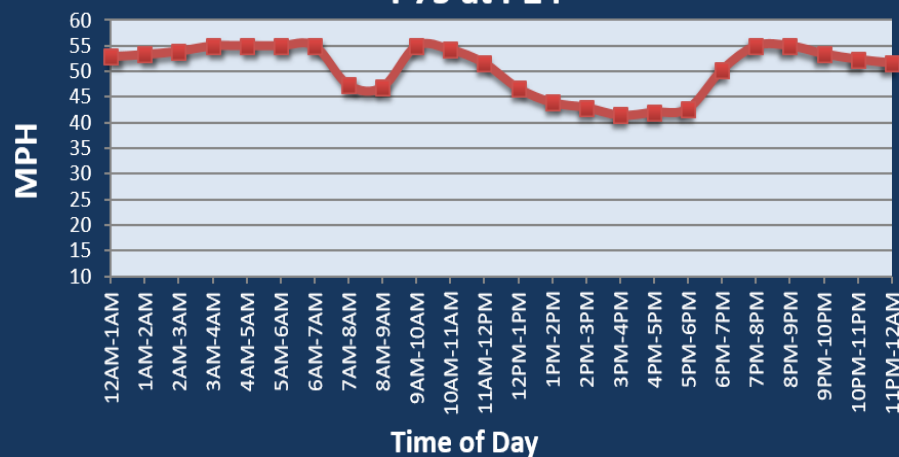


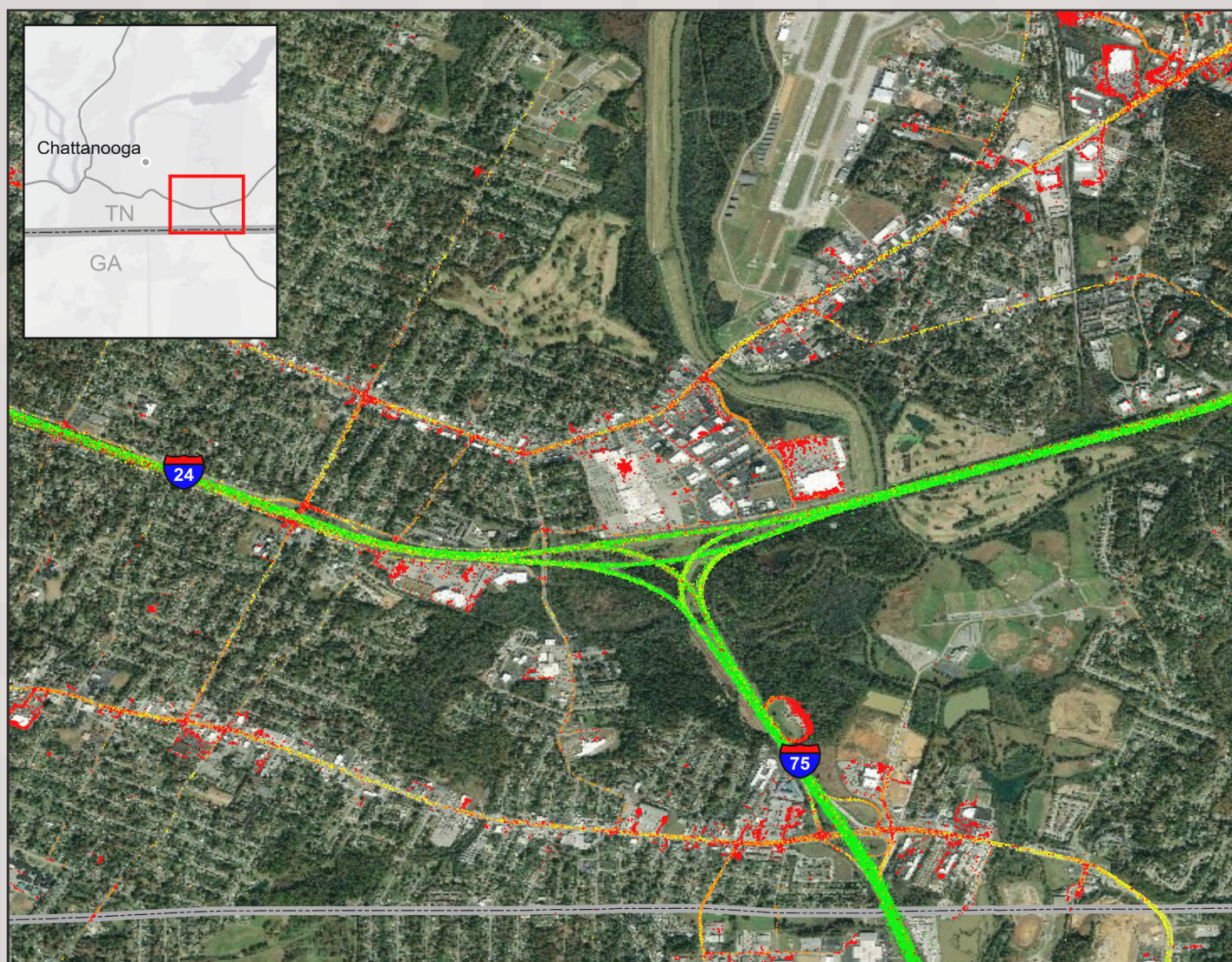
Chattanooga, TN: I-75 at I-24

**Average Speed by Time of Day
I-75 at I-24**



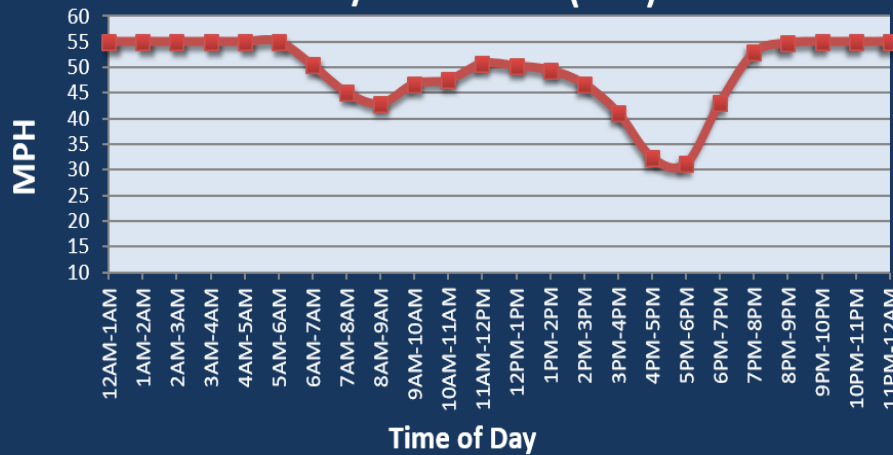
Summary

National Ranking by Congestion Index	7
Average Speed	49.3
Peak Average Speed	46.8
Nonpeak Average Speed	50.4
Nonpeak/Peak Ratio	1.08
Peak Average Speed Percent Change 2019 - 2020	-1.8%



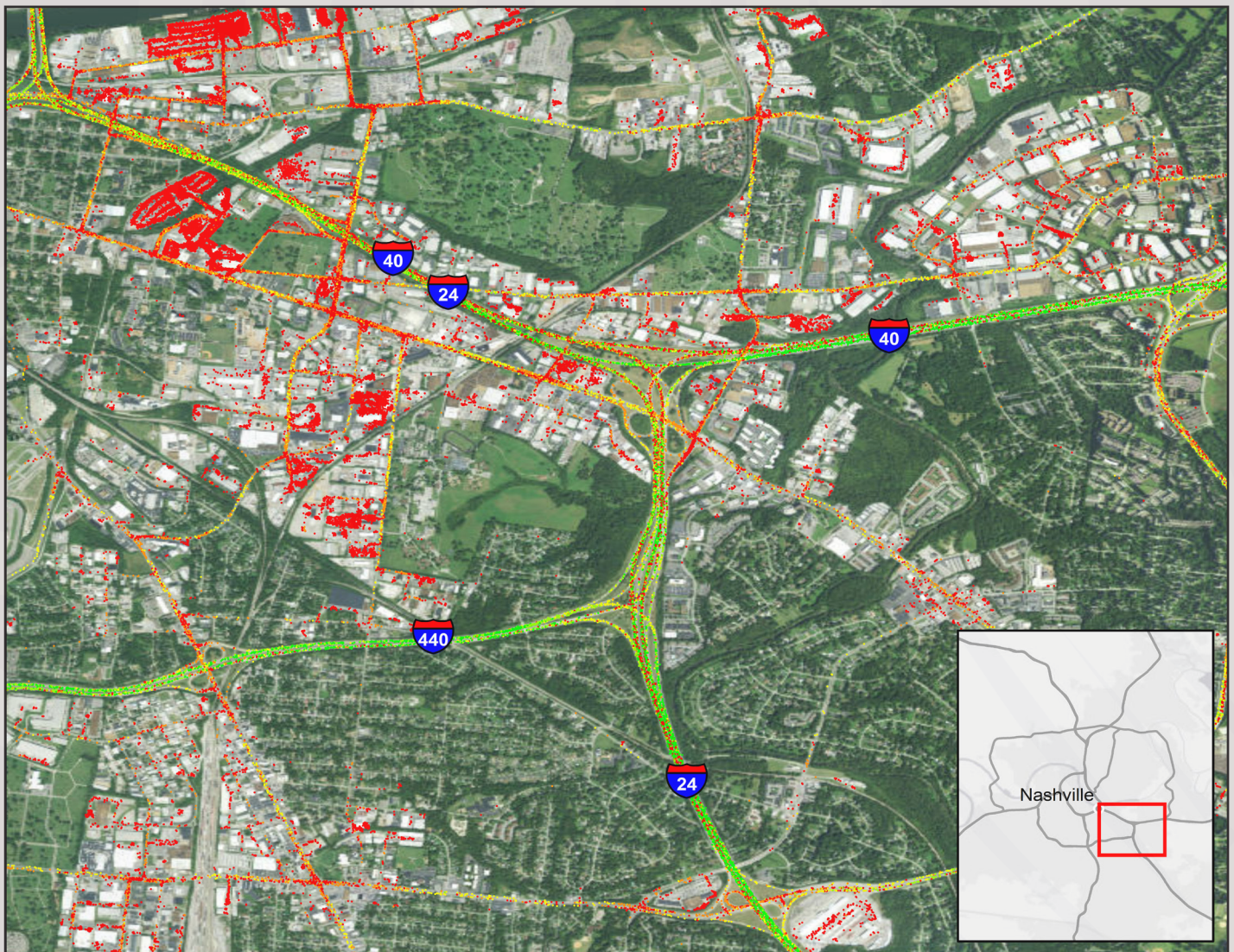
Nashville, TN: I-24/I-40 at I-440 (East)

Average Speed by Time of Day
I-24/I-40 at I-440 (East)



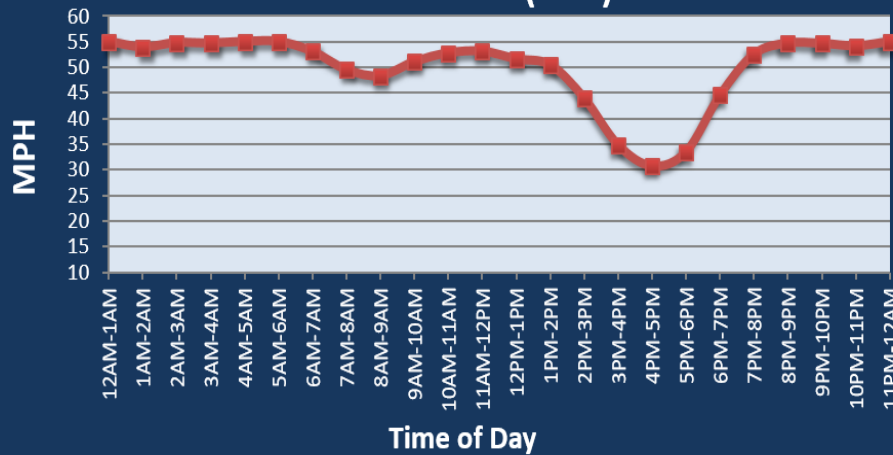
Summary

National Ranking by Congestion Index	13
Average Speed	47.3
Peak Average Speed	39.9
Nonpeak Average Speed	50.5
Nonpeak/Peak Ratio	1.27
Peak Average Speed Percent Change 2019 - 2020	65.9%



Nashville, TN: I-40 at I-65 (East)

**Average Speed by Time of Day
I-40 at I-65 (East)**



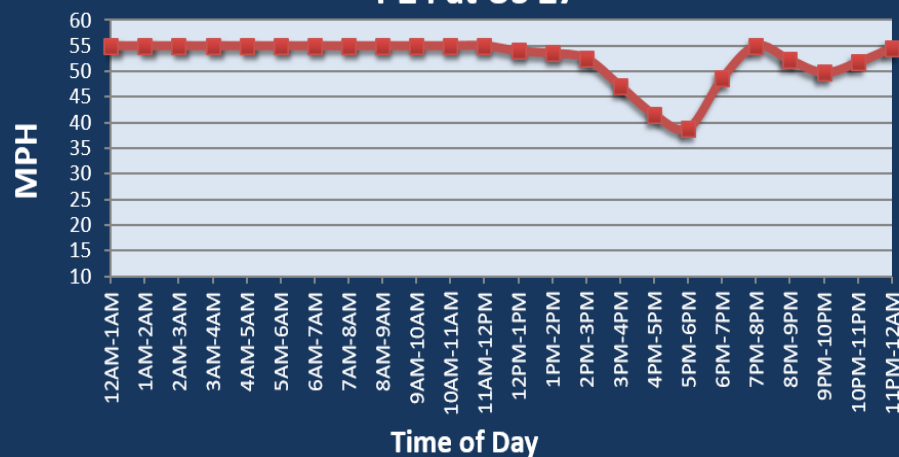
Summary

National Ranking by Congestion Index	35
Average Speed	47.7
Peak Average Speed	41.4
Nonpeak Average Speed	50.3
Nonpeak/Peak Ratio	1.22
Peak Average Speed Percent Change 2019 - 2020	56.8%



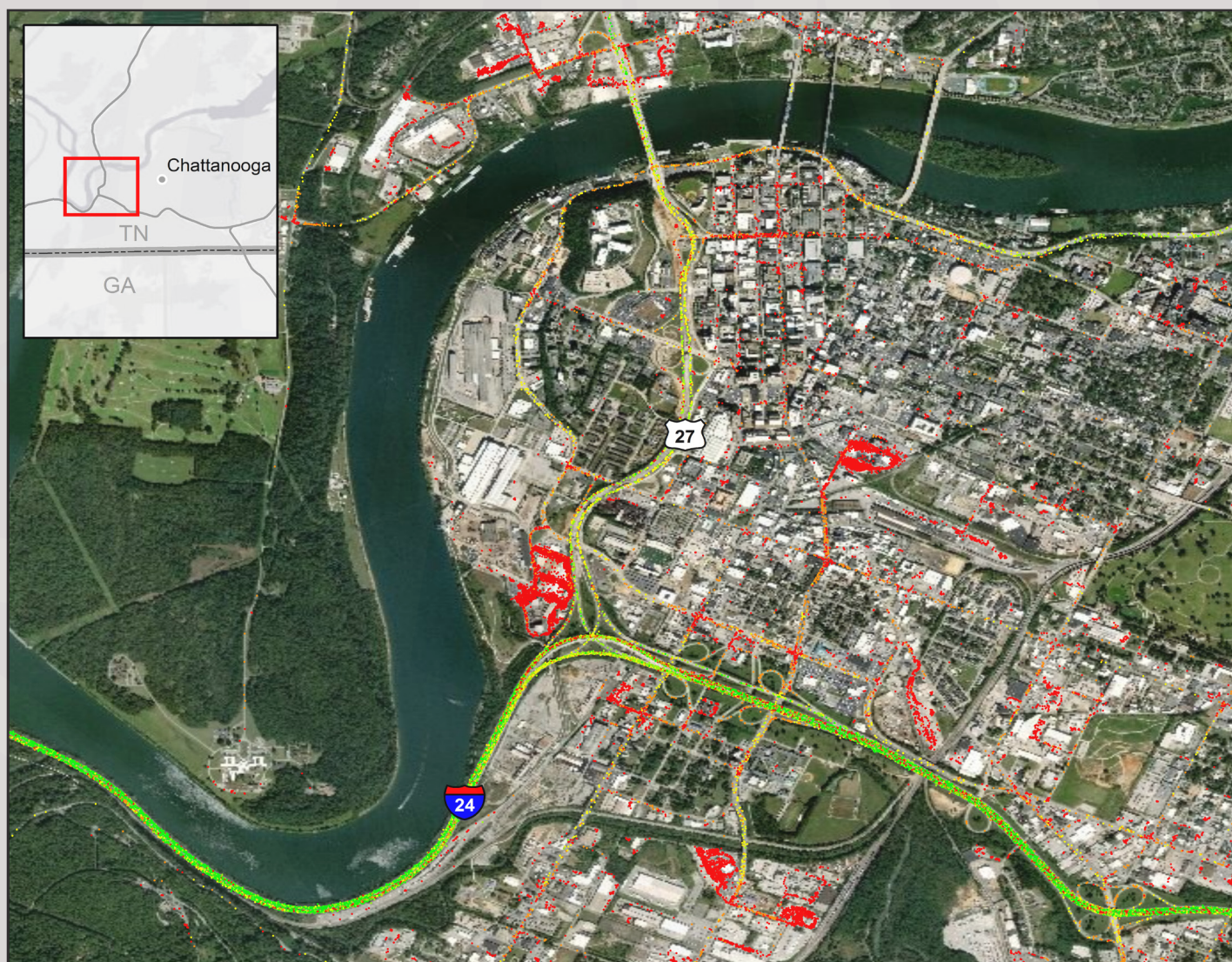
Chattanooga, TN: I-24 at US 27

**Average Speed by Time of Day
I-24 at US 27**



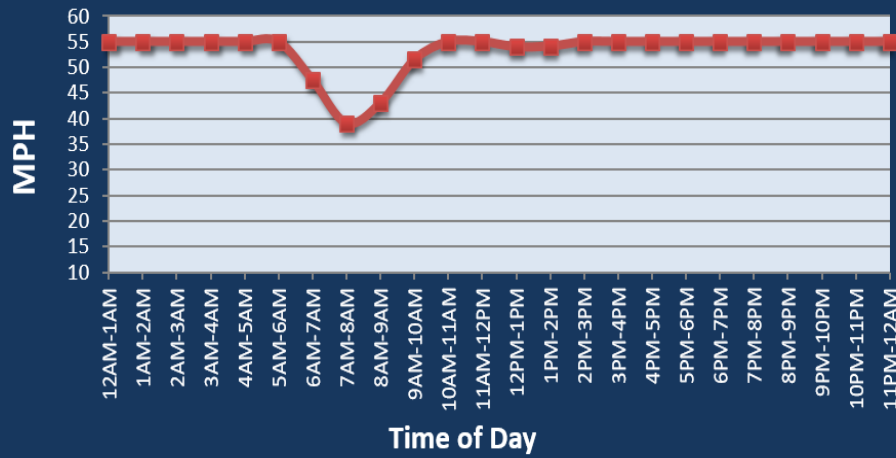
Summary

National Ranking by Congestion Index	53
Average Speed	51.6
Peak Average Speed	47.6
Nonpeak Average Speed	53.3
Nonpeak/Peak Ratio	1.12
Peak Average Speed Percent Change 2019 - 2020	25.3%



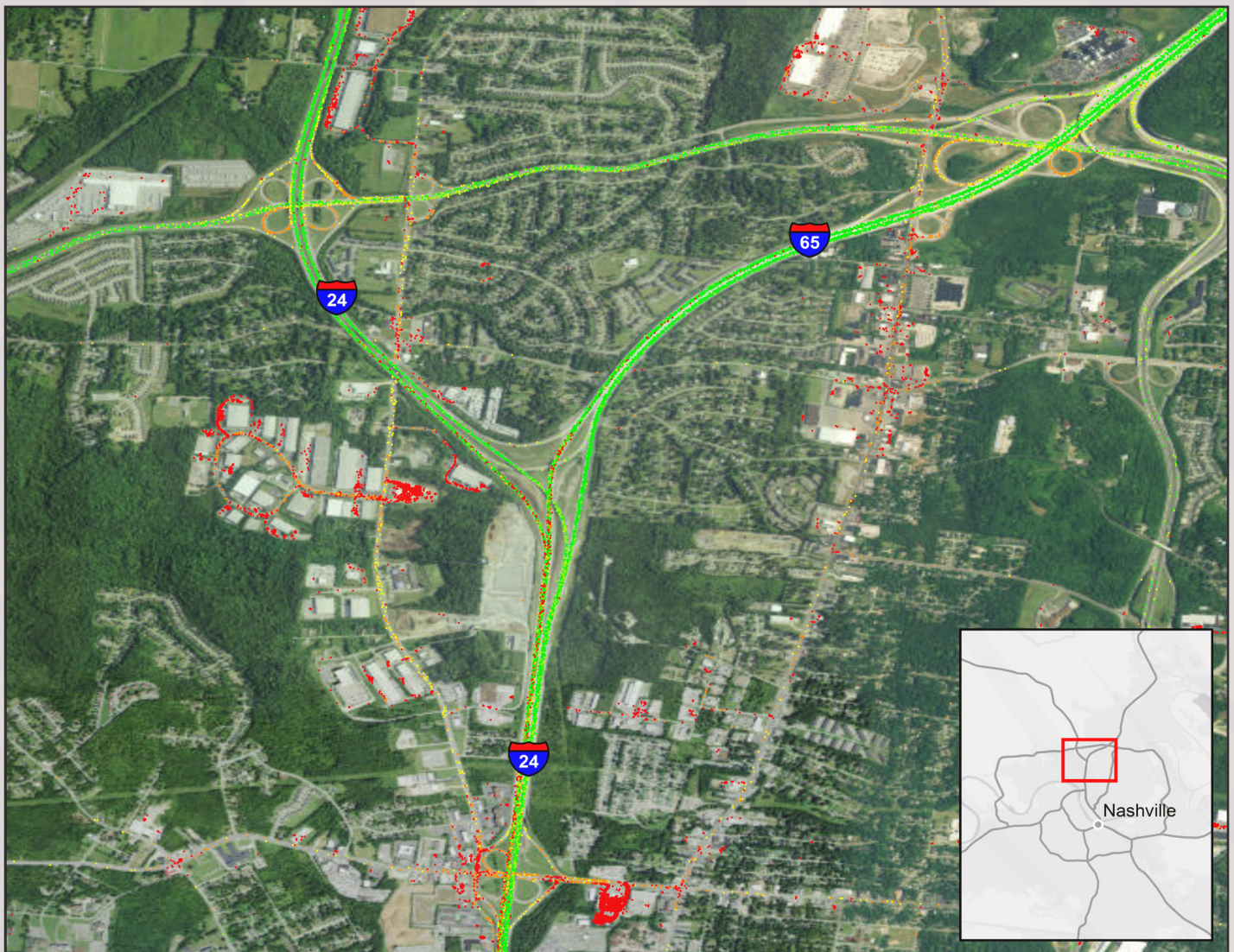
Nashville, TN: I-65 at I-24

Average Speed by Time of Day
I-65 at I-24



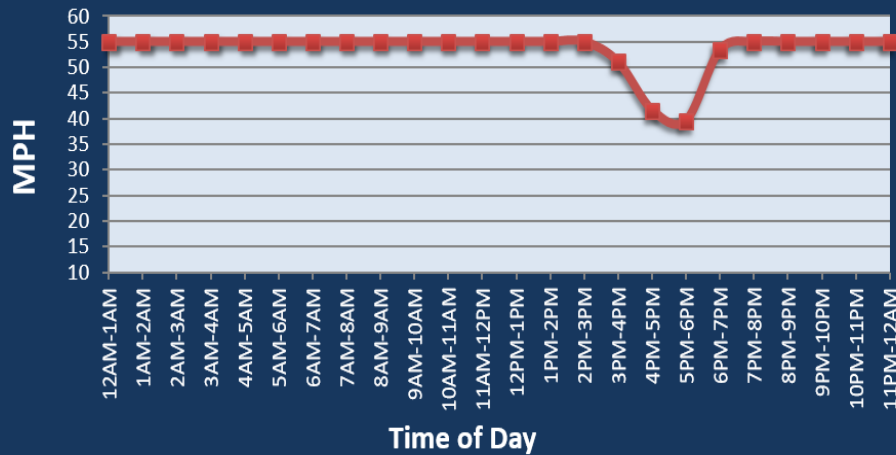
Summary

National Ranking by Congestion Index	77
Average Speed	52.6
Peak Average Speed	47.9
Nonpeak Average Speed	54.5
Nonpeak/Peak Ratio	1.14
Peak Average Speed Percent Change 2019 - 2020	30.0%



Nashville, TN: I-65 at SR 386

Average Speed by Time of Day
I-65 at SR 386



Summary

National Ranking by Congestion Index	88
Average Speed	52.8
Peak Average Speed	48.6
Nonpeak Average Speed	54.7
Nonpeak/Peak Ratio	1.13
Peak Average Speed Percent Change 2019 - 2020	11.0%

